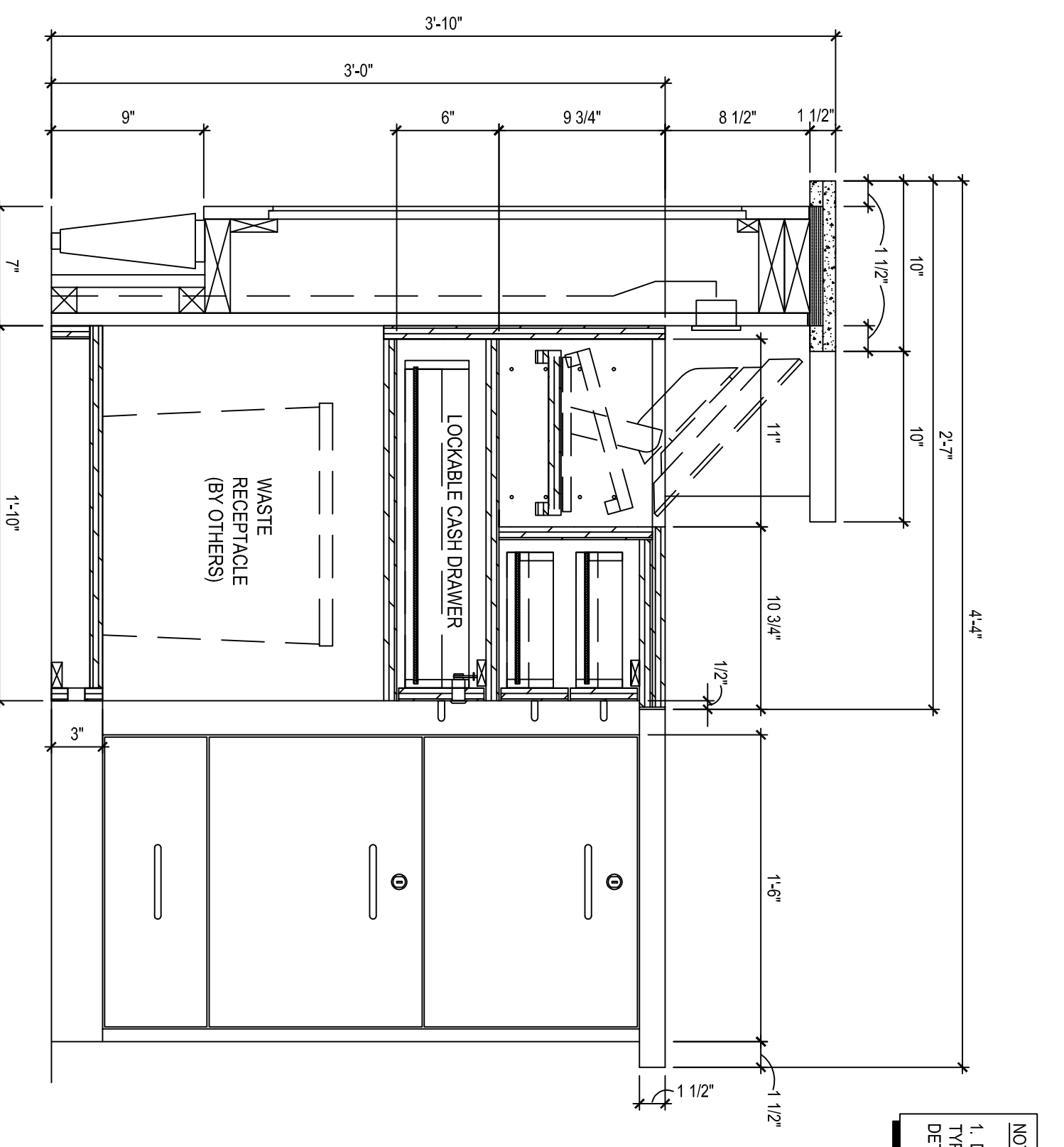


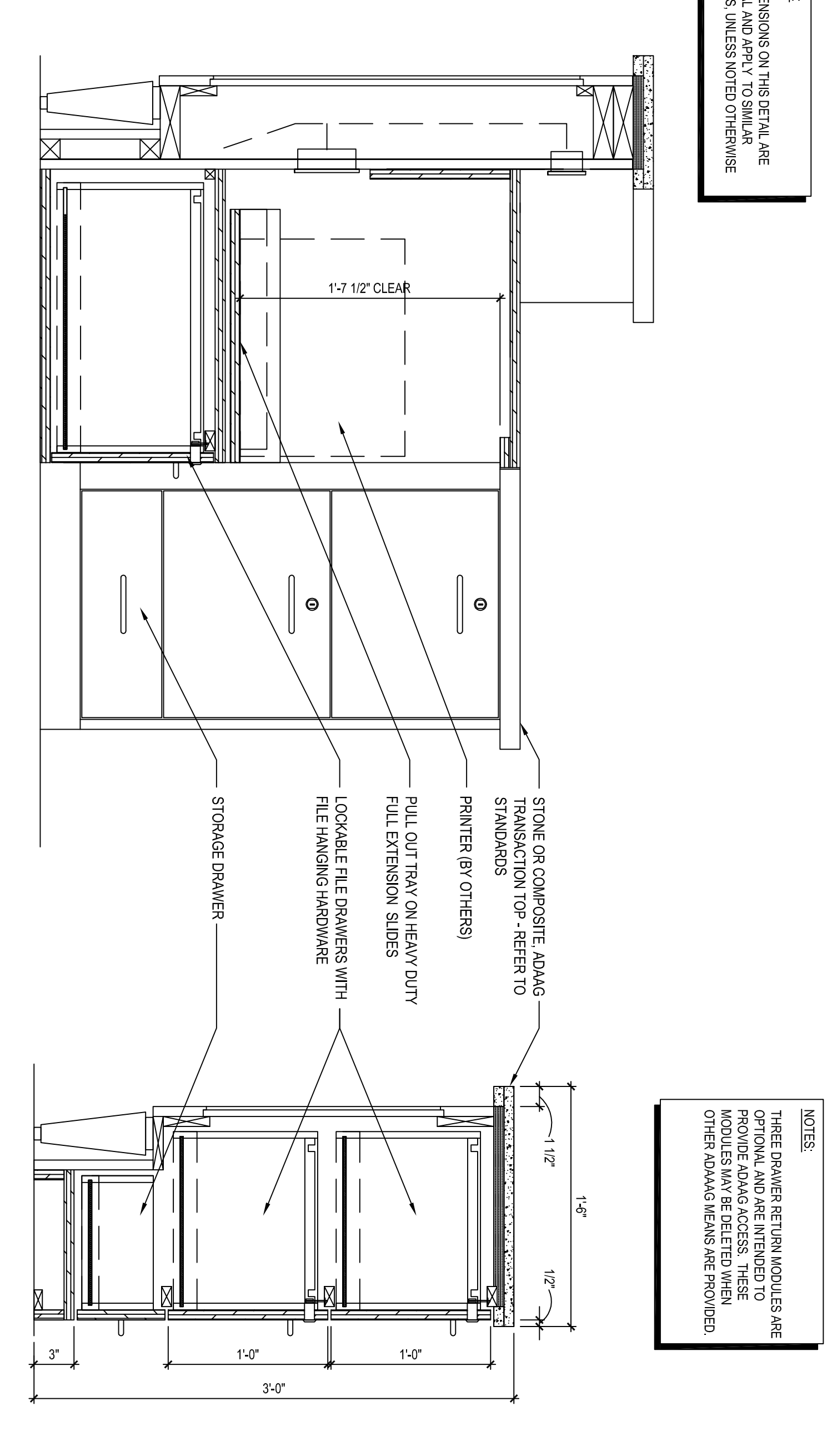
NOTES
 1. NOTES ON THIS DETAIL ARE TYPICAL UNLESS NOTED OTHERWISE

1 SECTION DETAIL
 A-17c SCALE: 1/2" = 1'-0"



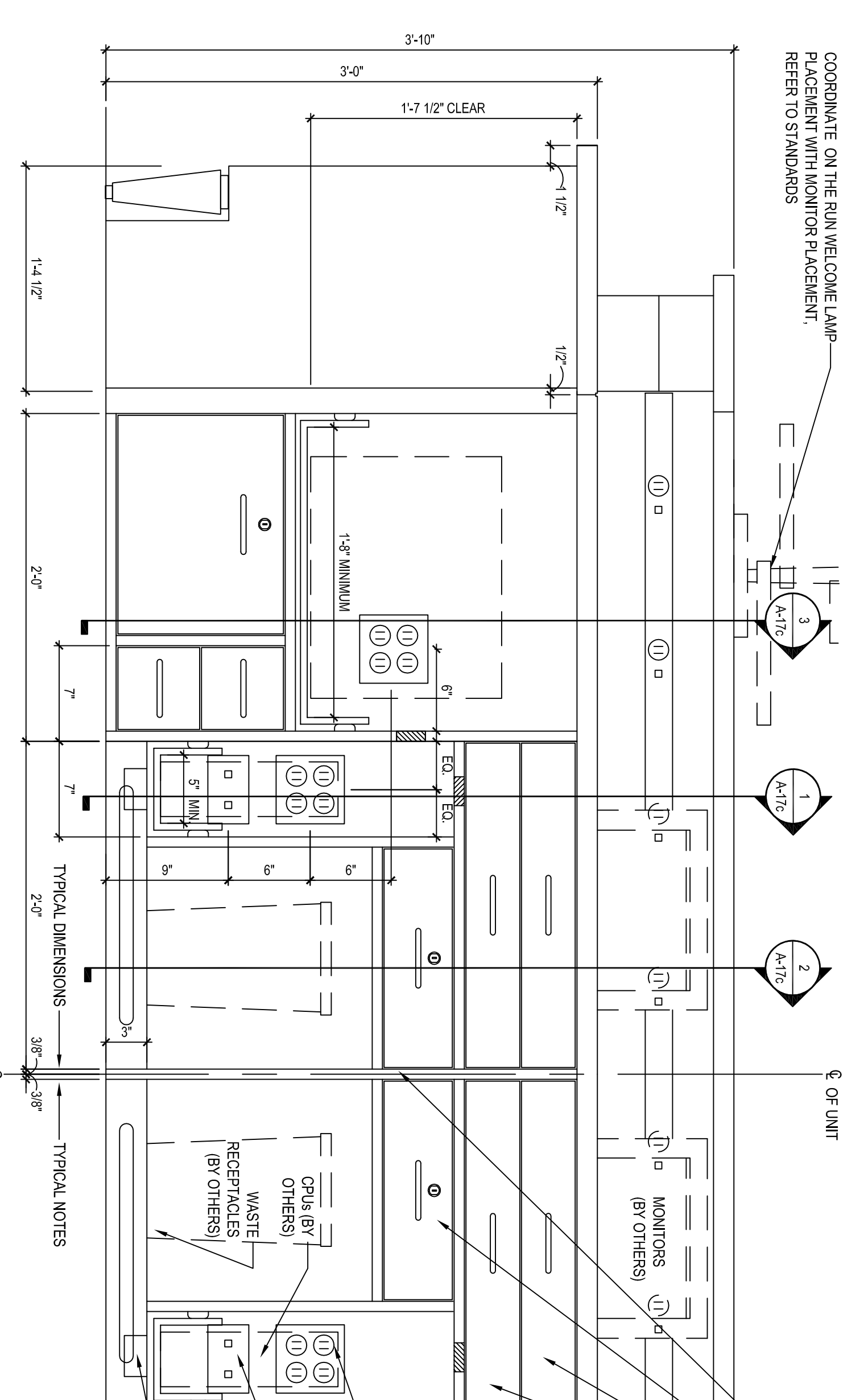
NOTES
 1. NOTES ON THIS DETAIL ARE TYPICAL UNLESS NOTED OTHERWISE

2 SECTION DETAIL
 A-17c SCALE: 1/2" = 1'-0"

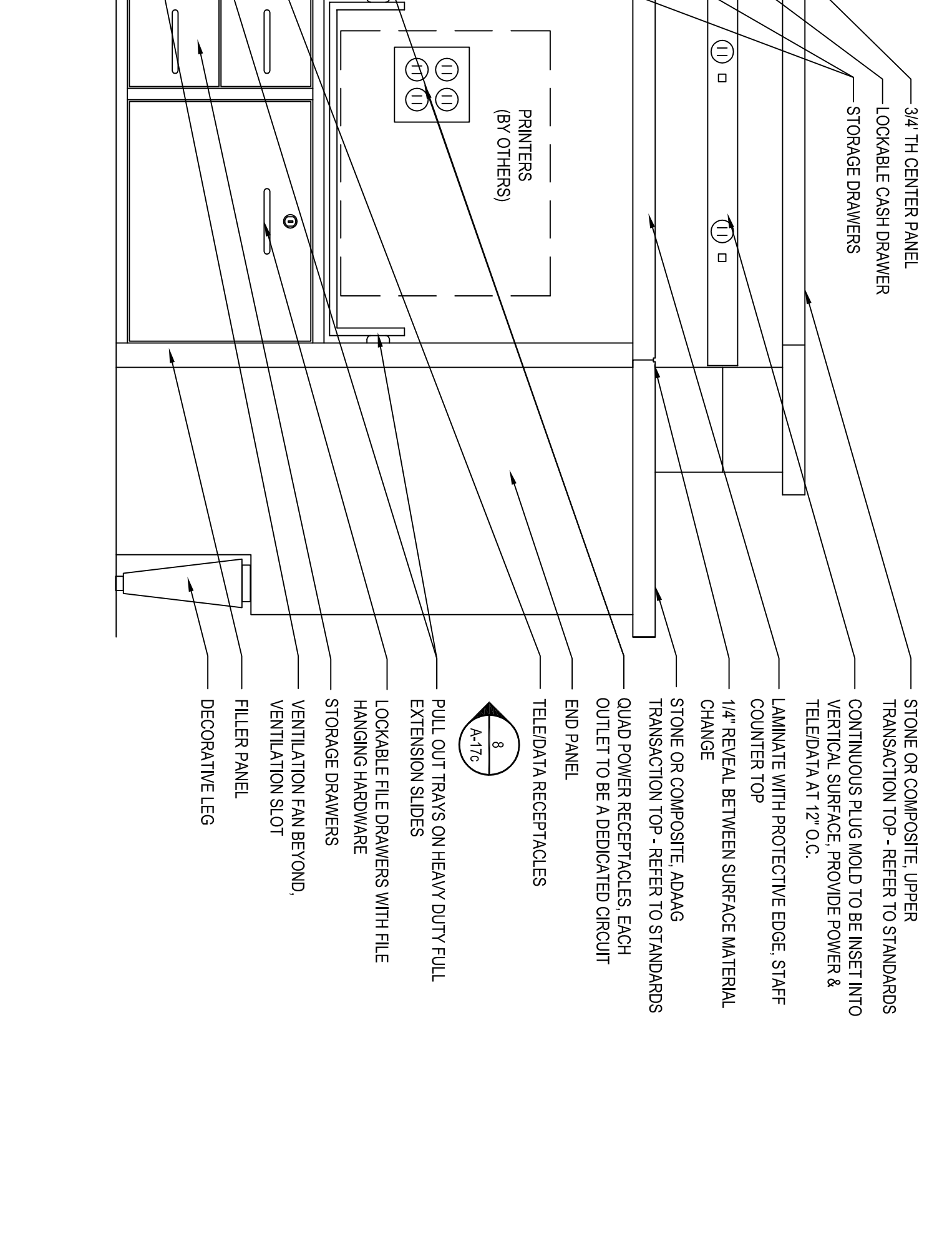


NOTES
 1. NOTES ON THIS DETAIL ARE TYPICAL UNLESS NOTED OTHERWISE

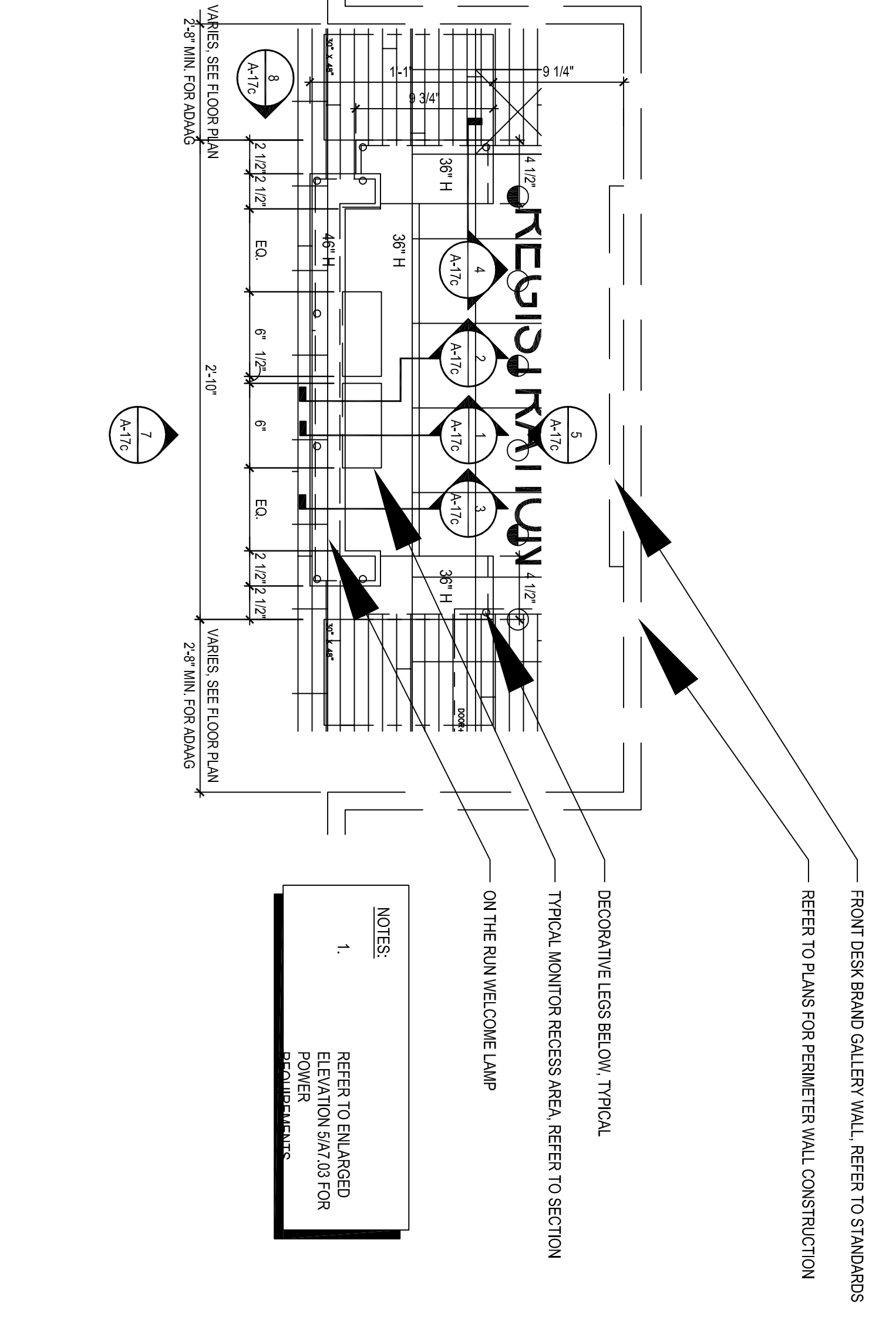
3 SECTION DETAIL
 A-17c SCALE: 1/2" = 1'-0"



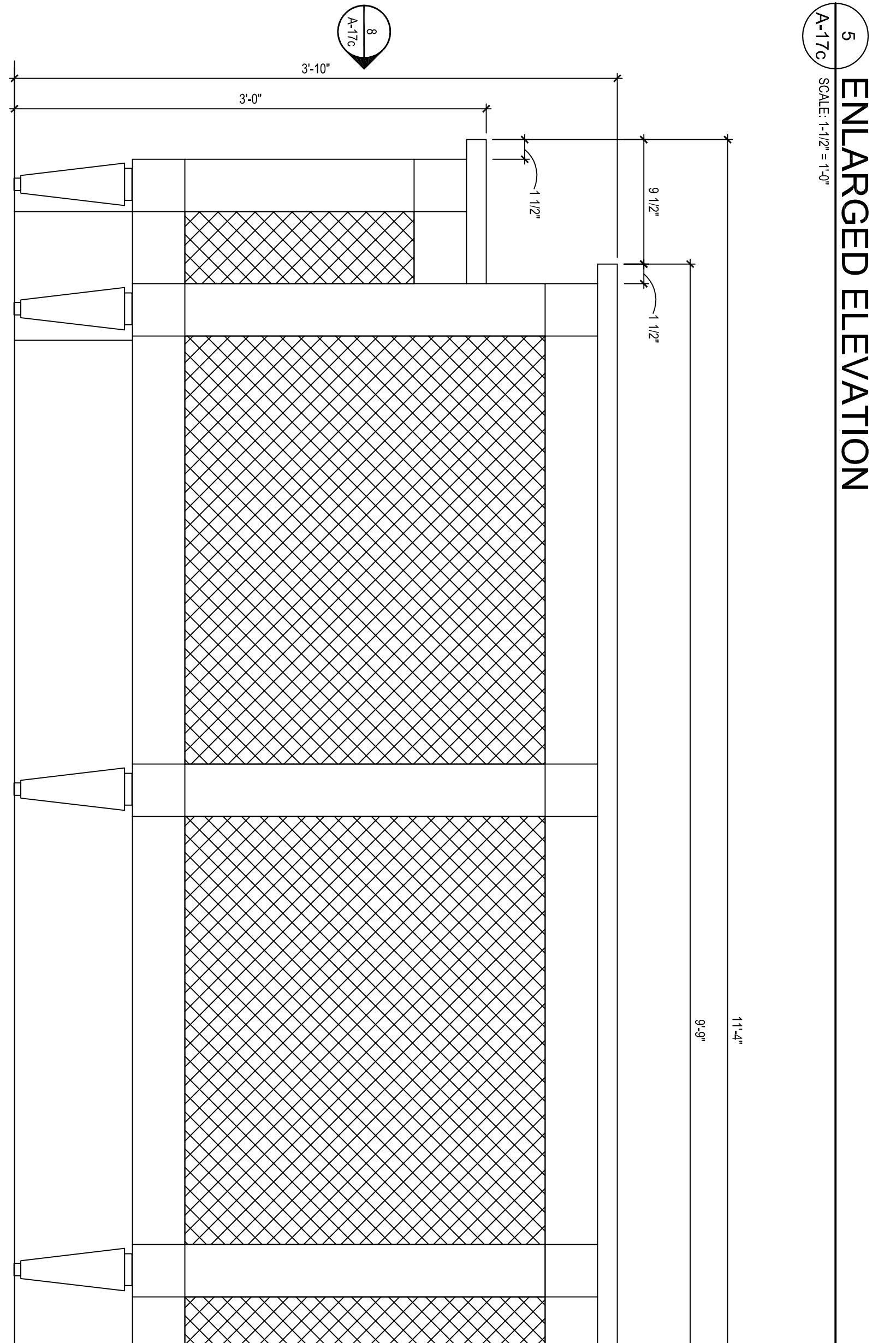
4 SECTION DETAIL
 A-17c SCALE: 1/2" = 1'-0"



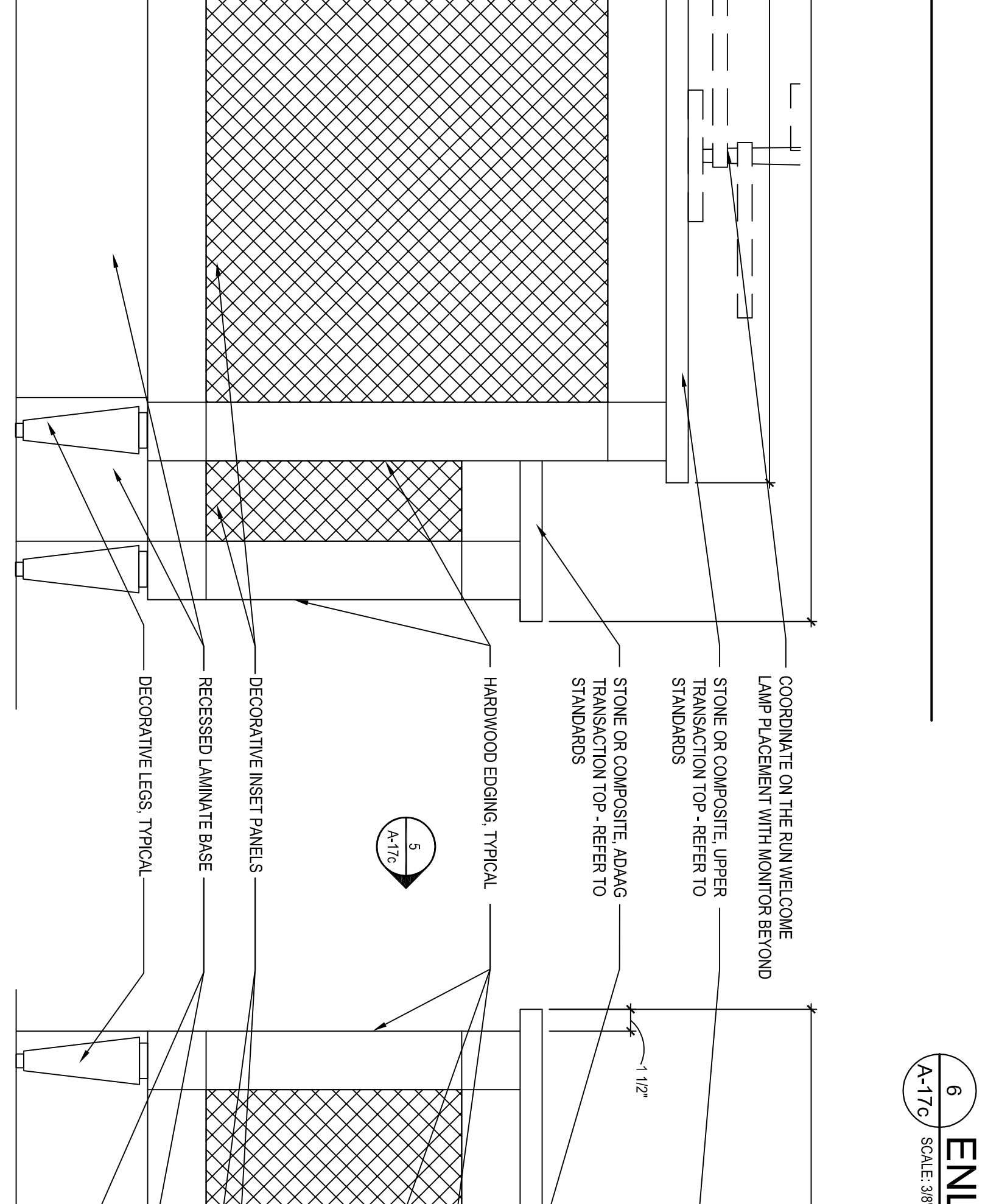
5 SECTION DETAIL
 A-17c SCALE: 1/2" = 1'-0"



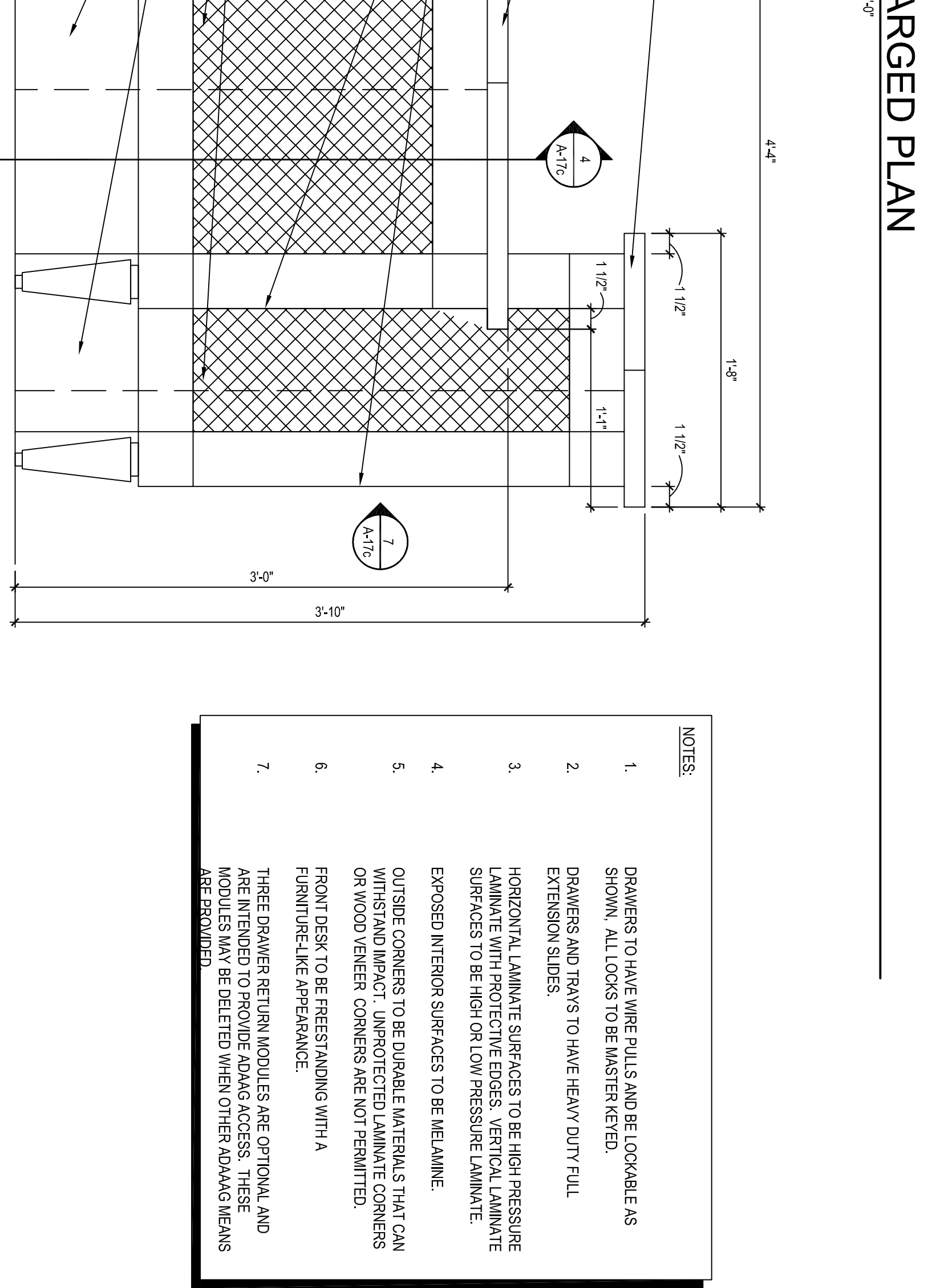
6 SECTION DETAIL
 A-17c SCALE: 3/8\"/>



7 ENLARGED ELEVATION
 A-17c SCALE: 1/2" = 1'-0"



8 ENLARGED ELEVATION
 A-17c SCALE: 1/2" = 1'-0"



9 ENLARGED PLAN
 A-17c SCALE: 3/8\"/>

NOTES
 1. DRAWERS TO HAVE WIRE PULLS AND BE LOCKABLE AS SHOWN. ALL LOCKS TO BE MASTER KEYED.
 2. DRAWERS AND TRAYS TO HAVE HEAVY DUTY FULL EXTENSION SLIDES.
 3. HORIZONTAL LAMINATE SURFACES TO BE HIGH PRESSURE LAMINATE WITH AN ANTI-SCRATCH FINISH.
 4. EXPOSED INTERIOR SURFACES TO BE MELAMINE.
 5. OUTRIG CORNERS TO BE DISABLE MATERIALS THAT CAN WITHSTAND IMPACT. UNPROTECTED LAMINATE CORNERS OR WOOD VENEER CORNERS ARE NOT PERMITTED.
 6. FRONT DESK TO BE FREESTANDING WITH A FURNITURE-LIKE APPEARANCE.
 7. THREE DRAWER RETURN MODULES ARE OPTIONAL AND MODULES MAY BE DELETED WHEN OTHER ADAAG MEANS ARE PROVIDED.

NOTES
 1. REFER TO ENLARGED ELEVATION 5A/23 FOR ADAAG MEANS